

REVISIONS			
REV	DESCRIPTION	DATE	APPROVED
A	Released	5/12/2009	

G315-8 (682 MBTH)								
Oil								
Riello	A	B	Power Flame	A	B	Beckett	A	B
F20	11 3/4	21 3/4	C1-0	30 7/8	34 1/8	CF1400	21 1/4	25 3/4

Legend		
ABR.	Name	Size
VK	Supply	3
RK	Return	3
EL	Boiler Drain	3/4

NOTE 1. 'A' Dimension is to the back of the burner.  
 'B' Dimension is the extraction dimension.

2. All dimensions are in inches.  
 3. Manifold provided, field assembly required.  
 4. Burner shipped separately; field assembly required.

Bosch Thermotechnology Corp.  
 50 Wentworth Ave.  
 Londonderry, NH 03053  
 Phone: 603-552-1100

Tolerance

Fraction=±1/4"  
 x.x=±0.030  
 x.xx=±0.015  
 x.xxx=±0.005

(UNLESS OTHERWISE NOTED)

This drawing is the exclusive property of Bosch Thermotechnology Corporation, it may not be reproduced or given to third parties.

Drawn By:  
 M SPIRIDIGLOZZI

Approved By:  
 J MILLS

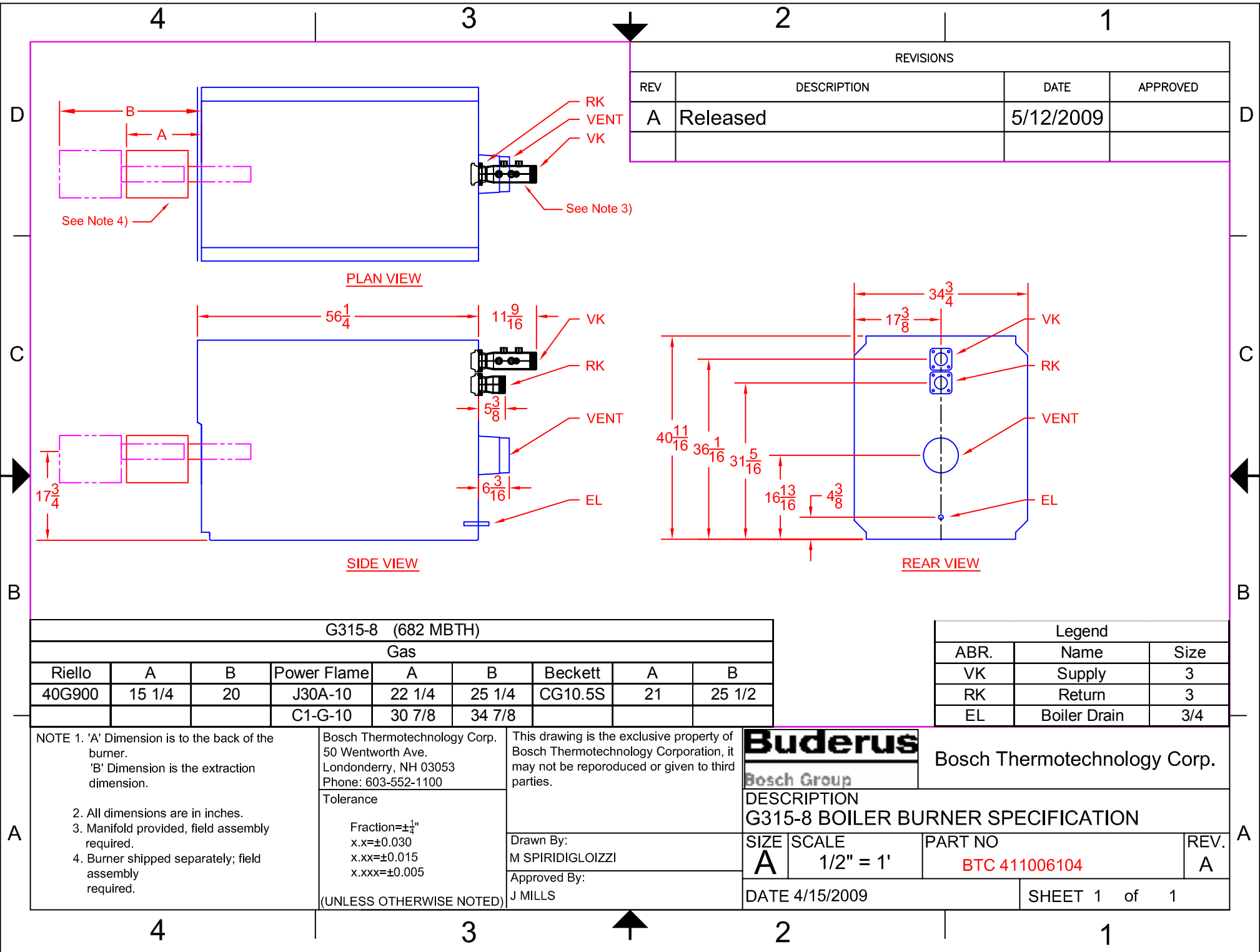
**Buderus**  
 Bosch Group

Bosch Thermotechnology Corp.

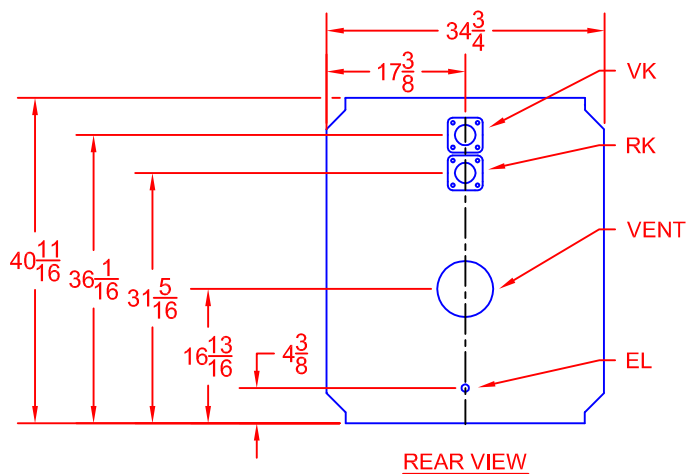
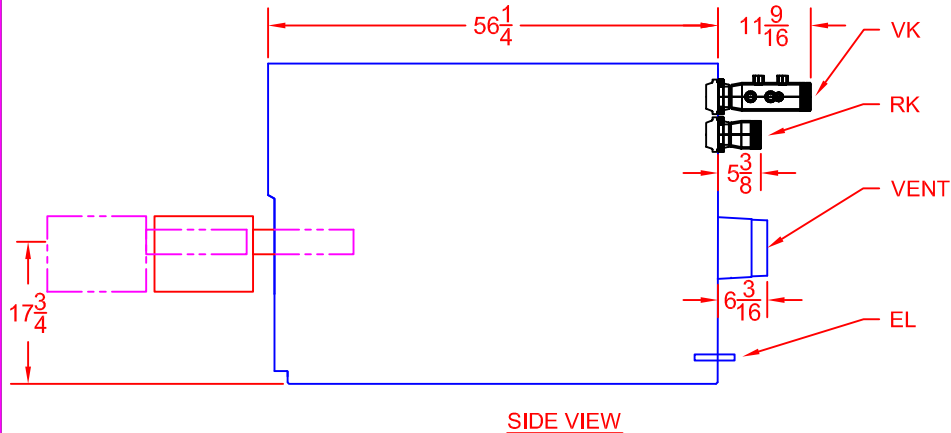
DESCRIPTION  
**G315-8 BOILER BURNER SPECIFICATION**

SIZE	SCALE	PART NO	REV.
A	1/2" = 1'	BTC 411006104	A

DATE 4/15/2009 SHEET 1 of 1



REVISIONS			
REV	DESCRIPTION	DATE	APPROVED
A	Released	5/12/2009	



G315-8 (682 MBTH)								
Gas								
Riello	A	B	Power Flame	A	B	Beckett	A	B
40G900	15 1/4	20	J30A-10	22 1/4	25 1/4	CG10.5S	21	25 1/2
			C1-G-10	30 7/8	34 7/8			

Legend		
ABR.	Name	Size
VK	Supply	3
RK	Return	3
EL	Boiler Drain	3/4

NOTE 1. 'A' Dimension is to the back of the burner.  
 'B' Dimension is the extraction dimension.

2. All dimensions are in inches.  
 3. Manifold provided, field assembly required.  
 4. Burner shipped separately; field assembly required.

Bosch Thermotechnology Corp.  
 50 Wentworth Ave.  
 Londonderry, NH 03053  
 Phone: 603-552-1100

Tolerance

Fraction=±<sup>1</sup>/<sub>4</sub>"  
 x.x=±0.030  
 x.xx=±0.015  
 x.xxx=±0.005

(UNLESS OTHERWISE NOTED)

This drawing is the exclusive property of Bosch Thermotechnology Corporation, it may not be reproduced or given to third parties.

Drawn By:  
 M SPIRIDIGLOZZI

Approved By:  
 J MILLS

**Buderus**  
 Bosch Group

Bosch Thermotechnology Corp.

DESCRIPTION  
**G315-8 BOILER BURNER SPECIFICATION**

SIZE	SCALE	PART NO	REV.
<b>A</b>	1/2" = 1'	<b>BTC 411006104</b>	<b>A</b>

DATE 4/15/2009

SHEET 1 of 1

4

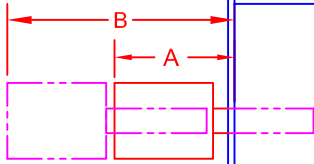
3

2

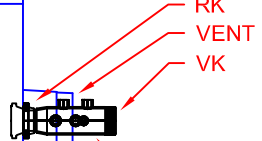
1

REVISIONS

REV	DESCRIPTION	DATE	APPROVED
A	Released	5/12/2009	

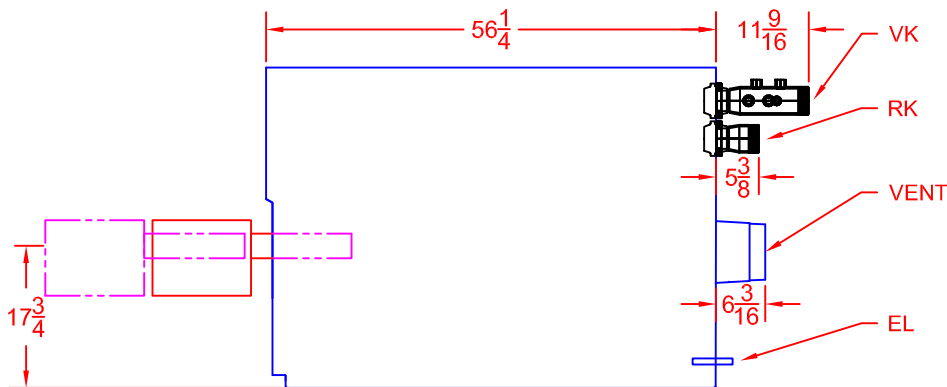


See Note 4)

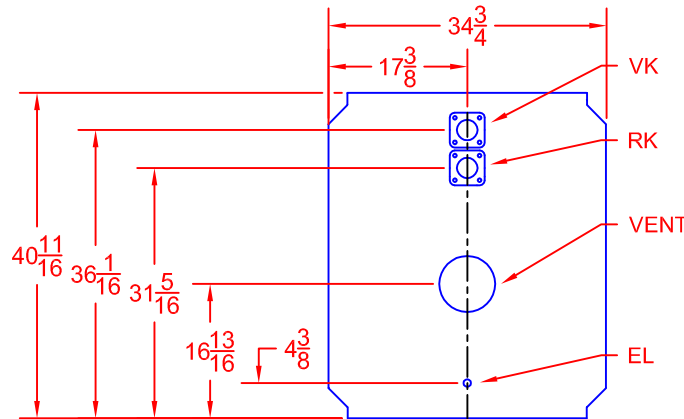


See Note 3)

PLAN VIEW



SIDE VIEW



REAR VIEW

G315-8 (682 MBTH)		
Combination		
Power Flame	A	B
C1-GO-10	30 7/8	34 7/8

Legend		
ABR.	Name	Size
VK	Supply	3
RK	Return	3
EL	Boiler Drain	3/4

NOTE 1. 'A' Dimension is to the back of the burner.  
 'B' Dimension is the extraction dimension.

- 2. All dimensions are in inches.
- 3. Manifold provided, field assembly required.
- 4. Burner shipped separately; field assembly required.

Bosch Thermotechnology Corp.  
 50 Wentworth Ave.  
 Londonderry, NH 03053  
 Phone: 603-552-1100

Tolerance  
 Fraction= $\pm\frac{1}{4}$ "  
 x.x= $\pm 0.030$   
 x.xx= $\pm 0.015$   
 x.xxx= $\pm 0.005$   
 (UNLESS OTHERWISE NOTED)

This drawing is the exclusive property of Bosch Thermotechnology Corporation, it may not be reproduced or given to third parties.

Drawn By:  
 M SPIRIDIGLOZZI  
 Approved By:  
 J MILLS



Bosch Thermotechnology Corp.

DESCRIPTION  
**G315-8 BOILER BURNER SPECIFICATION**

SIZE	SCALE	PART NO	REV.
A	1/2" = 1'	BTC 411006104	A
DATE 4/15/2009		SHEET 1 of 1	

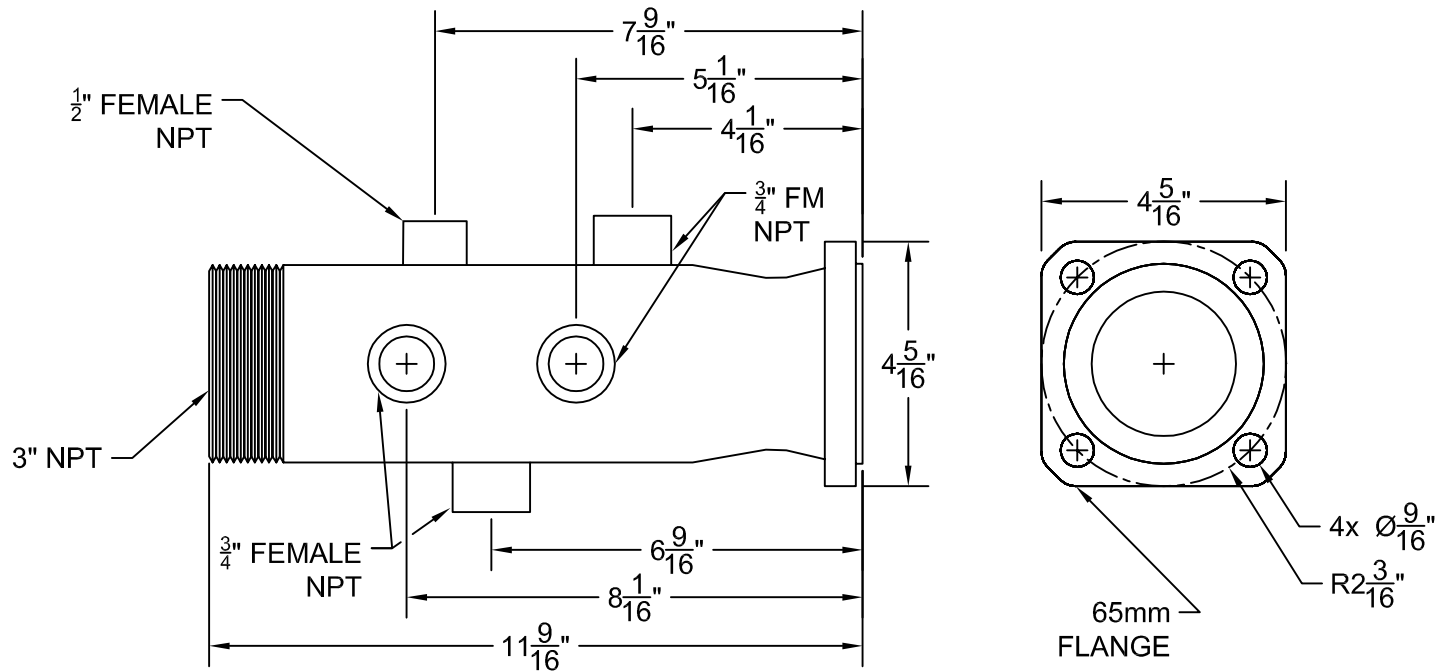
4

3

2

1

REVISIONS			
REV	DESCRIPTION	DATE	APPROVED
A	RELEASED	6/12/2009	



NOTE  
 1. All dimensions are in inches.  
 2. All pipe sizes are NPT.

Bosch Thermotechnology Corp.  
 50 Wentworth Ave.  
 Londonderry, NH 03053  
 Phone: 603-552-1100

Tolerance  
 Fraction = ± 1/4"  
 x.x = ± 0.030  
 x.xx = ± 0.015  
 x.xxx = ± 0.005  
 (UNLESS OTHERWISE NOTED)

This drawing is the exclusive property of Bosch Thermotechnology Corporation, it may not be reproduced or given to third parties.

Drawn By:  
 M SPIRIDIGLOZZI

Approved By:  
 J MILLS

<b>Buderus</b>		Bosch Thermotechnology Corp.	
Bosch Group		DESCRIPTION	
G315 SUPPLY MANIFOLD SPECIFICATION			
SIZE	SCALE	PART NO.	REV.
A	NTS	BTC 411006111	A
DATE 6/9/2009		SHEET 1 of 2	

4

3

2

1

REVISIONS

REV	DESCRIPTION	DATE	APPROVED
A	RELEASED	6/12/2009	

D

D

C

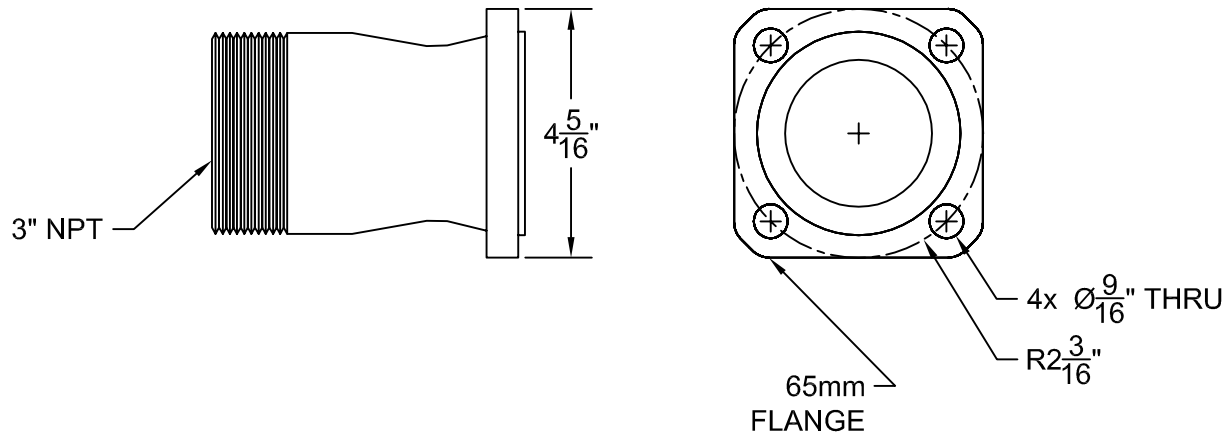
C

B

B

A

A



NOTE

- 1. All dimensions are in inches.
- 2. All pipe sizes are NPT.

Bosch Thermotechnology Corp.  
 50 Wentworth Ave.  
 Londonderry, NH 03053  
 Phone: 603-552-1100

Tolerance  
 Fraction =  $\pm \frac{1}{4}$ "  
 x.x =  $\pm 0.030$   
 x.xx =  $\pm 0.015$   
 x.xxx =  $\pm 0.005$   
 (UNLESS OTHERWISE NOTED)

This drawing is the exclusive property of Bosch Thermotechnology Corporation, it may not be reproduced or given to third parties.

Drawn By:  
 M SPIRIDIGLOZZI  
 Approved By:  
 J MILLS

**Buderus**  
 Bosch Group

Bosch Thermotechnology Corp.

DESCRIPTION  
 G315 RETURN MANIFOLD SPECIFICATION

SIZE <b>A</b>	SCALE NTS	PART NO. BTC 411006111	REV. A
DATE 6/9/2009		SHEET 1 of 2	

4

3

2

1